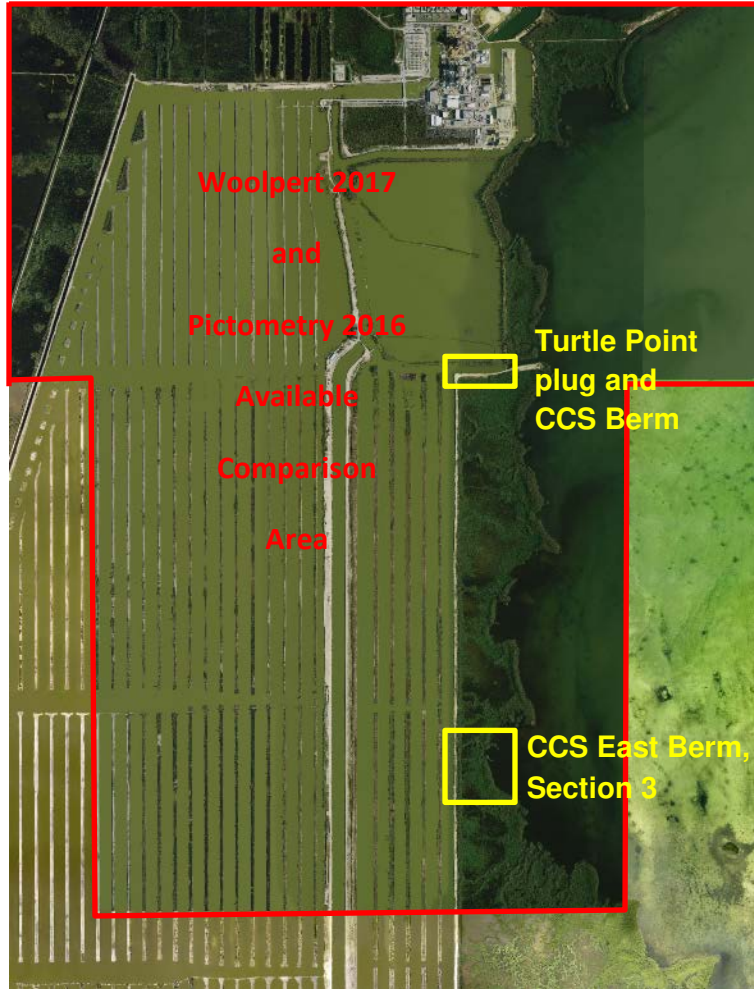


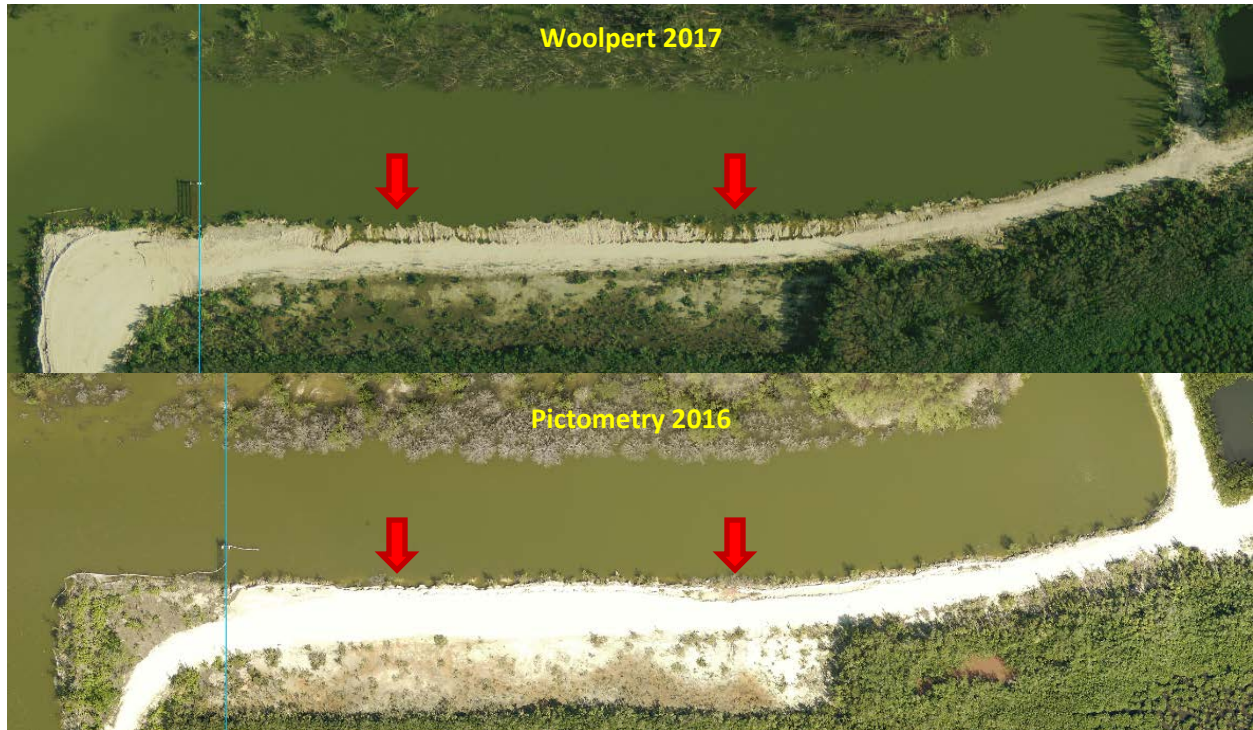
Post-Irma FPL Cooling Canal System Observations
(Woolpert aerial imagery taken on September 13th and 14th, 2017,
compared to 2016 Pictometry aerial imagery)

Available comparison area (red box) and areas of interest (yellow boxes):



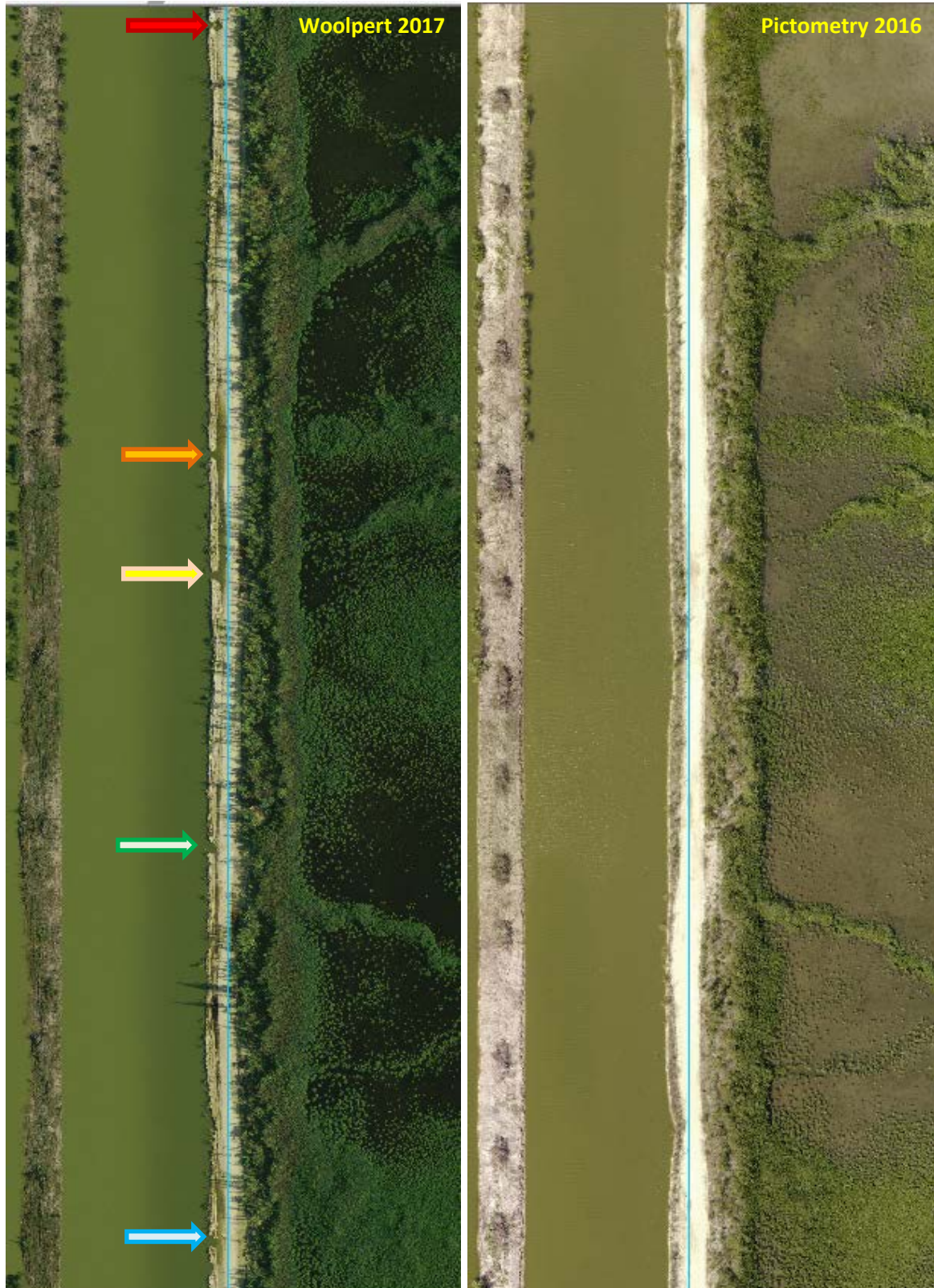
Post-Irma FPL Cooling Canal System Observations
(Woolpert aerial imagery taken on September 13th and 14th, 2017,
compared to 2016 Pictometry aerial imagery)

Turtle Point plug and CCS berm:



Post-Irma FPL Cooling Canal System Observations
(Woolpert aerial imagery taken on September 13th and 14th, 2017,
compared to 2016 Pictometry aerial imagery)

CCS East Berm, Section 3:




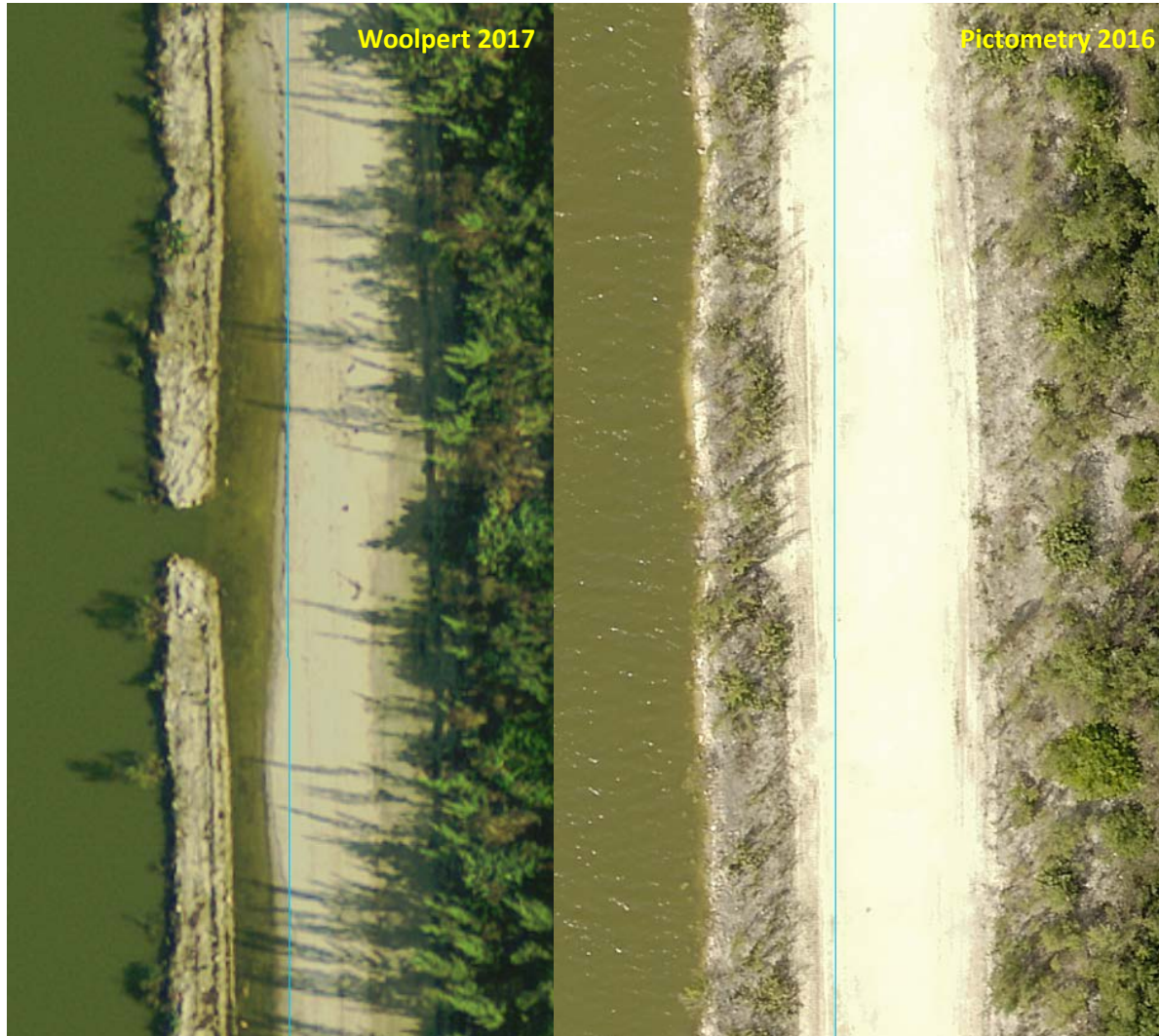
Post-Irma FPL Cooling Canal System Observations
(Woolpert aerial imagery taken on September 13th and 14th, 2017,
compared to 2016 Pictometry aerial imagery)

CCS East Berm, Section 3, close-up at red arrow (→):




Post-Irma FPL Cooling Canal System Observations
(Woolpert aerial imagery taken on September 13th and 14th, 2017,
compared to 2016 Pictometry aerial imagery)

CCS East Berm, Section 3, close-up at orange arrow ():




Post-Irma FPL Cooling Canal System Observations
(Woolpert aerial imagery taken on September 13th and 14th, 2017,
compared to 2016 Pictometry aerial imagery)

CCS East Berm, Section 3, close-up at yellow arrow ():




Post-Irma FPL Cooling Canal System Observations
(Woolpert aerial imagery taken on September 13th and 14th, 2017,
compared to 2016 Pictometry aerial imagery)

CCS East Berm, Section 3, close-up at green arrow () :



Post-Irma FPL Cooling Canal System Observations
(Woolpert aerial imagery taken on September 13th and 14th, 2017,
compared to 2016 Pictometry aerial imagery)

CCS East Berm, Section 3, close-up at blue arrow () :

